



ANOKA-HENNEPIN
SCHOOLS
A future without limit

ANOKA-HENNEPIN DISTRICT 11

October 1, 2023

ENROLLMENT REPORT



ANOKA-HENNEPIN
SCHOOLS
A future without limit

October 16, 2023

To: School Board Members
Cabinet Members

From: Joel VerDuin, Chief Technology & Information Officer
Michelle VanDenTop, Director Technology & Information Services
Nick Herman, Data Integration Manager

October 1, 2023 Enrollment Report

The October 1 report is an accounting of the annual projection cycle which uses a number of assumptions, processes and data sources.

Attached is the October 1, 2023 enrollment counts report. The report includes:

- Fall Enrollment Summary (Pages 1 and 2)
- Elementary Counts & Trends (Pages 3 to 5)
- Secondary Counts & Trends (Pages 6 and 7)
- Ethnicity by School & Trends (Pages 8 and 9)
- ESL by School by Service Level (Page 10)
- F/R (Free & Reduced) Counts & Trends (Pages 11 and 12)

Total Enrollment

The total K-12 enrollment summary (page 1) shows an overall increase of 171 students from 2022 to 2023. The October 1 count shows 86 fewer students than originally projected.

Compared to projected

Elementary

- Kindergarten enrollment has 108 less students than projected.
- Grades 1-5 are down 169 students from projected.
- K-5 counts were 277 students less than projected

Middle School

- The middle schools showed a decrease from projection, down 40 students.

High School

- There are 231 more students than projected at the high schools.

Compared to last year's Oct 1

Elementary

- Kindergarten counts decreased by 101 students from the previous year.
- Grades 1-5 count increased by 59 students from the previous year.
- The K-5 elementary count decreased by 42 students from the previous year.

Middle School

- The middle school count decreased by 102 students from the previous year.

High School

- The high school student count increased by 213 students from the previous year.

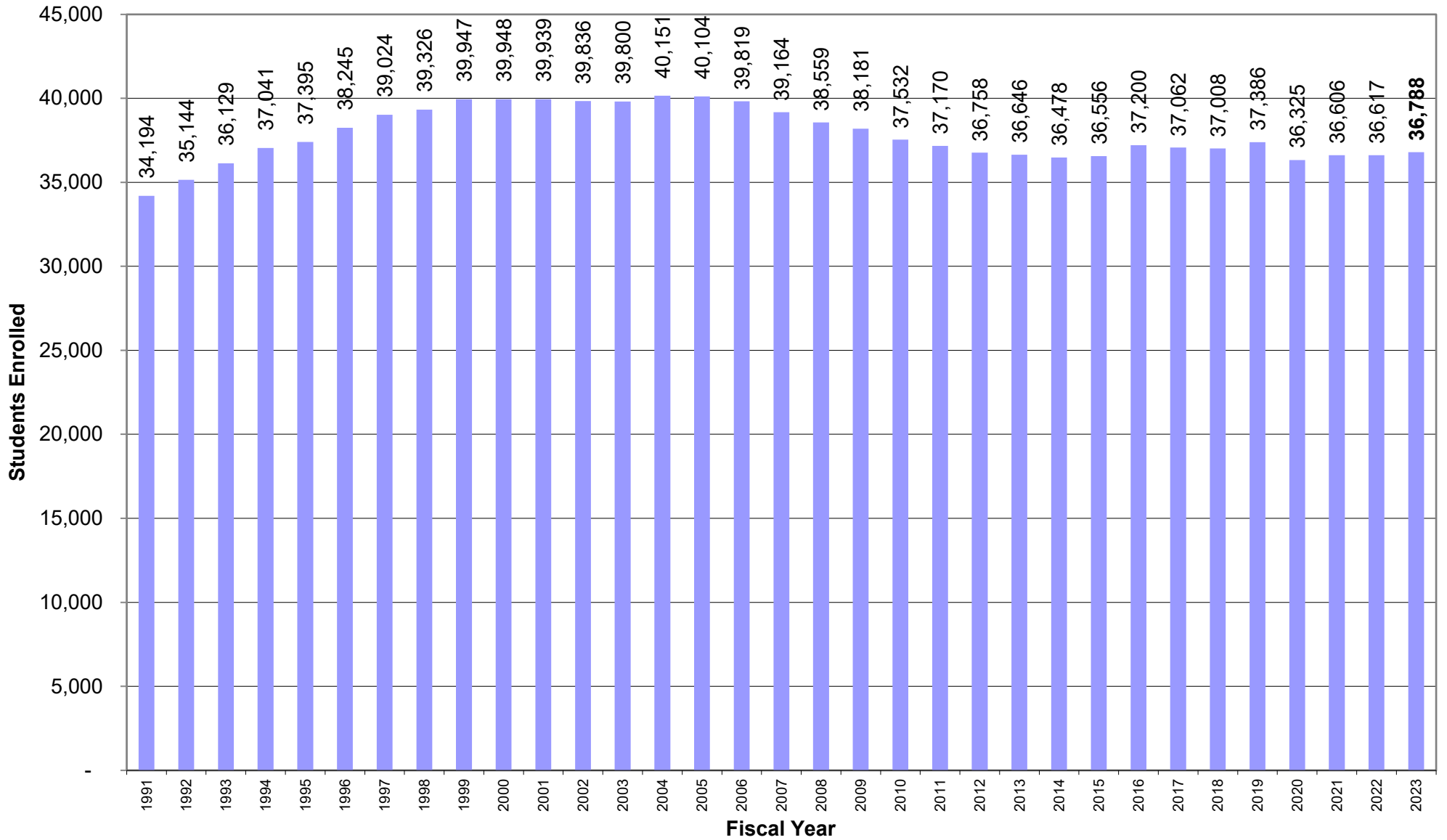
The secondary counts include those students participating in the S.T.E.P. program. The number of students participating on a full or part time basis from each of the high schools is listed on the bottom of the secondary counts page.

**Fall Enrollment Summary
October 1, 2023**

Grade Level	Actual	Actual	Actual	Actual	Actual	Actual	Actual	Actual	Actual	Actual	Actual 22 to 23 Diff	2023 Projected	Proj Diff
	Oct 1, 2015	Oct 1, 2016	Oct 1, 2017	Oct 1, 2018	Oct 1, 2019	Oct 1, 2020	Oct 1, 2021	Oct 1, 2022	Oct 1, 2023				
K	2,525	2,595	2,554	2,580	2,682	2,371	2,600	2,553	2,452	-101		2,560	-108
1 - 5	13,685	13,847	13,620	13,425	13,485	12,925	12,972	13,353	13,412	59		13,581	-169
Elementary	16,210	16,442	16,174	16,005	16,167	15,296	15,572	15,906	15,864	-42		16,141	-277
6 - 8	8,601	8,824	8,958	8,966	8,952	8,653	8,488	8,443	8,341	-102		8,381	-40
9 - 12	11,745	11,934	11,930	12,037	12,267	12,376	12,546	12,268	12,583	315		12,352	231
Secondary	20,346	20,758	20,888	21,003	21,219	21,029	21,034	20,711	20,924	213		20,733	191
K - 12 Totals	36,556	37,200	37,062	37,008	37,386	36,325	36,606	36,617	36,788	171		36,874	-86
Alternative Day	379	399	399	289	326	342	444	413	419	6			
SPED Sites	297	288	285	238	225	343	331	312	133	-179			
K - 12 Day Totals	37,232	37,887	37,746	37,535	37,937	37,010	37,381	37,342	37,340	-2			
Alternative Night	245	271	268	290	230	183	371	353	412	59			
EC Spec Ed	815	794	875	897	934	878	792	1,028	1,131	103			
KR Preschool PLUS		68	128	146	143	133	133	138	142	4			
* PreK - 12 Totals	38,292	39,020	39,017	38,868	39,244	38,204	38,677	38,861	39,025	164			

* Includes full-time, part-time and dual-enrolled students

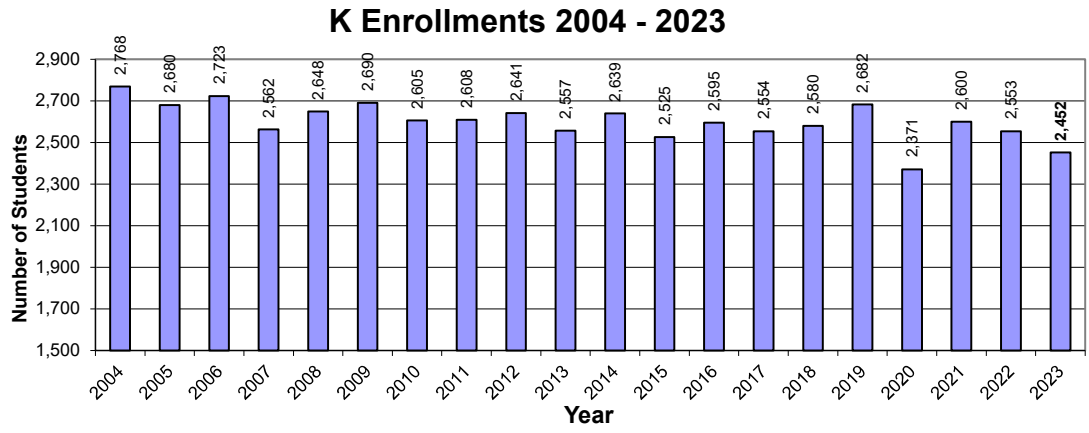
Anoka-Hennepin ISD11
Total Enrollment History
October 1



**Elementary Counts
October 1, 2023**

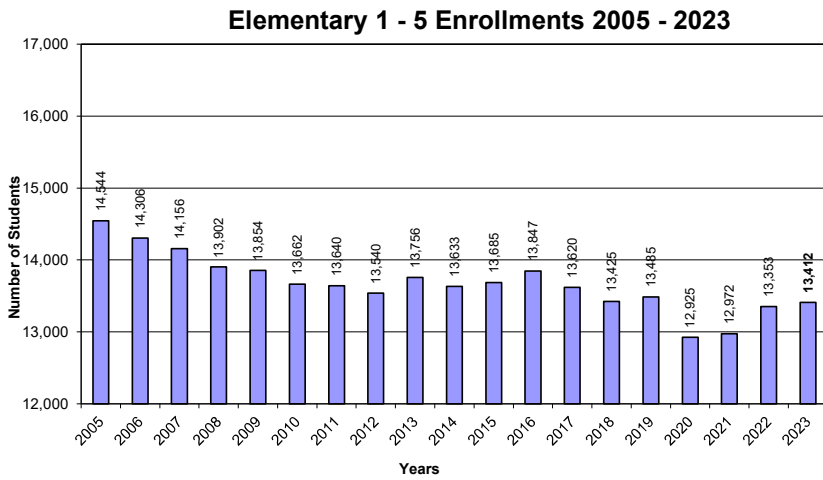
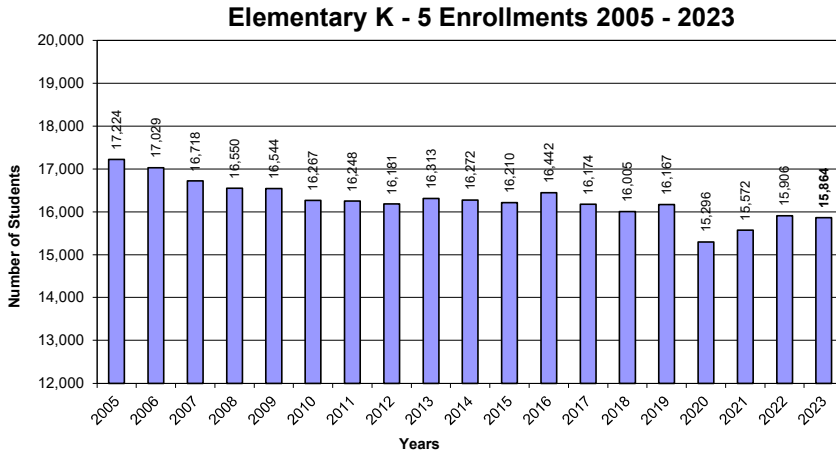
School Name	Sch#	K	Gr 1	Gr 2	Gr 3	Gr 4	Gr 5	Total	Projected	
									Projected	Diff
Adams Elementary School	400	86	74	86	72	71	79	468	481	-13
Andover Elementary School	426	188	209	174	195	213	225	1,204	1,198	6
Brookside Elementary School	432	115	118	132	129	159	122	775	780	-5
Champlin Brooklyn Park	430	113	113	134	129	141	145	775	857	-82
Crooked Lake Elementary	402	62	73	93	69	85	76	458	474	-16
Dayton Elementary School	424	94	107	88	81	82	92	544	518	26
Eisenhower Elementary	422	66	61	61	98	102	97	485	473	12
Evergreen Park Elementary	421	61	68	69	61	69	80	408	393	15
Hamilton Elementary School	404	77	61	60	55	65	63	381	359	22
Hoover Elementary School	405	64	92	75	68	85	75	459	490	-31
Jefferson Elementary School	406	108	95	124	110	108	106	651	656	-5
Johnsville Elementary	407	109	105	125	104	98	121	662	707	-45
Lincoln Elementary School	408	77	69	83	70	55	73	427	462	-35
Madison Elementary School	410	72	60	69	77	71	75	424	426	-2
McKinley Elementary School	411	115	108	111	111	96	112	653	648	5
Mississippi Elementary	412	62	87	88	74	65	85	461	506	-45
Monroe Elementary School	413	84	75	93	90	100	103	545	597	-52
Morris Bye Elementary	414	80	68	76	72	77	67	440	449	-9
Oxbow Creek Elementary	425	145	206	171	178	218	192	1,110	1,102	8
Ramsey Elementary School	423	140	153	168	153	155	180	949	995	-46
Rum River Elementary	427	126	137	157	145	153	135	853	883	-30
Sand Creek Elementary	417	81	81	111	113	85	106	577	606	-29
Sunrise Elementary School	431	166	151	158	163	184	171	993	961	32
University Ave Elementary	418	83	101	94	108	88	114	588	569	19
Wilson Elementary School	420	78	96	104	96	108	92	574	551	23
October 1, 2023 Elem Totals		2,452	2,568	2,704	2,621	2,733	2,786	15,864	16,141	-277
Projected		2,560	2,609	2,740	2,659	2,793	2,780	16,141		
Difference from Projected		-108	-41	-36	-38	-60	6	-277		

**Kindergarten
October 1 Enrollment
2004 - 2023**



Year	K Enrollment
1994	3,053
1995	3,134
1996	3,098
1997	3,073
1998	3,005
1999	3,003
2000	2,857
2001	2,864
2002	2,772
2003	2,687
2004	2,768
2005	2,680
2006	2,723
2007	2,562
2008	2,648
2009	2,690
2010	2,605
2011	2,608
2012	2,641
2013	2,557
2014	2,639
2015	2,525
2016	2,595
2017	2,554
2018	2,580
2019	2,682
2020	2,371
2021	2,600
2022	2,553
2023	2,452

**Elementary Enrollments Grades K - 5
October 1 Enrollment
2005 - 2023**



Year	K-5	Year	K	Year	1-5
1993	18,304	1993	3,066	1993	15,238
1994	18,294	1994	3,053	1994	15,241
1995	18,693	1995	3,134	1995	15,559
1996	18,759	1996	3,098	1996	15,661
1997	18,776	1997	3,073	1997	15,703
1998	18,789	1998	3,005	1998	15,784
1999	18,869	1999	3,003	1999	15,866
2000	18,602	2000	2,857	2000	15,745
2001	18,214	2001	2,864	2001	15,350
2002	17,774	2002	2,772	2002	15,002
2003	17,565	2003	2,687	2003	14,878
2004	17,461	2004	2,768	2004	14,693
2005	17,224	2005	2,680	2005	14,544
2006	17,029	2006	2,723	2006	14,306
2007	16,718	2007	2,562	2007	14,156
2008	16,550	2008	2,648	2008	13,902
2009	16,544	2009	2,690	2009	13,854
2010	16,267	2010	2,605	2010	13,662
2011	16,248	2011	2,608	2011	13,640
2012	16,181	2012	2,641	2012	13,540
2013	16,313	2013	2,557	2013	13,756
2014	16,272	2014	2,639	2014	13,633
2015	16,210	2015	2,525	2015	13,685
2016	16,442	2016	2,595	2016	13,847
2017	16,174	2017	2,554	2017	13,620
2018	16,005	2018	2,580	2018	13,425
2019	16,167	2019	2,682	2019	13,485
2020	15,296	2020	2,371	2020	12,925
2021	15,572	2021	2,600	2021	12,972
2022	15,906	2022	2,553	2022	13,353
2023	15,864	2023	2,452	2023	13,412

**Secondary Counts
October 1, 2023**

School Name	Sch#	6	7	8	9	10	11	12	Total	Projected	
										Projected	Diff
Andover High School	0094				455	457	473	451	1,836	1,796	40
Anoka High School	0001				601	650	588	549	2,388	2,406	-18
Blaine High School	0091				828	783	801	727	3,139	3,074	65
Champlin Park High School	0192				735	735	830	716	3,016	2,903	113
Coon Rapids High School	0002				538	579	486	601	2,204	2,173	31
High School Totals					3,157	3,204	3,178	3,044	12,583	12,352	231
Anoka Middle School	0003	521	527	565					1,613	1,584	29
Coon Rapids Middle School	0004	427	457	477					1,361	1,472	-111
Jackson Middle School	0006	649	677	706					2,032	1,972	60
Northdale Middle School	0090	361	343	334					1,038	1,061	-23
Oak View Middle School	0193	421	427	434					1,282	1,272	10
Roosevelt Middle School	0195	326	344	345					1,015	1,020	-5
Middle School Totals		2,705	2,775	2,861					8,341	8,381	-40
Secondary Totals		2,705	2,775	2,861	3,157	3,204	3,178	3,044	20,924	20,733	191
Projected Secondary		2,741	2,848	2,950	3,121	3,293	3,139	3,010	21,102		
Difference		-36	-73	-89	36	-89	39	34	-178		

Alternative & Special Education Programs

School Name	Sch#	K-5	6	7	8	9	10	11	12	Total
A-H Regional High School	0110	0	0	0	0	0	26	70	116	212
A-H Technical High School	0434	0	0	0	0	0	0	0	159	159
Anthony Louis	0464	0	0	0	0	1	4	3	4	0
Compass BellCenter	0812	0	0	4	13	9	1	0	3	30
Compass On Line	0680	0	0	0	0	0	2	9	7	18
Alternative Day Totals		0	0	4	13	10	33	82	289	419
A-H Regional Night School	0111	0	0	0	0	0	41	103	268	412
Alternative Totals		0	0	4	13	10	74	185	557	831
* Not full-time equivalent										
		PreK-5	6	7	8	9	10	11	12	
Early Childhood Spec Ed	0437	1,131	0	0	0	0	0	0	0	1,131
Bridges	0436	0	0	0	0	0	0	0	1	1
Rivertrail Learning Center	0467	33	9	17	19	12	18	10	14	132
Pathways	0468	0	0	0	0	0	0	0	0	0
Total Special Education Sites		1,164	9	17	19	12	18	10	15	1,264

** Part time students

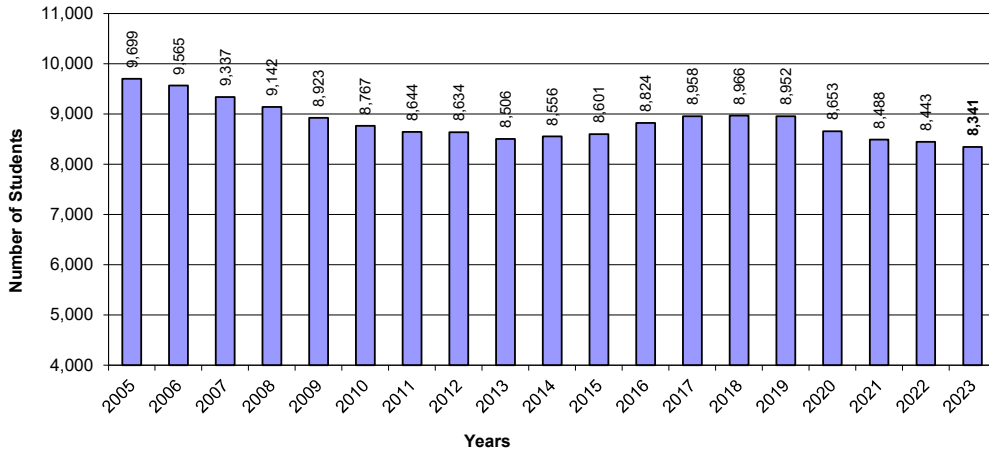
Sec Tech Ed Program	0198	Full Time				Part Time				Site
		Gr 10	Gr 11	Gr 12	FT Total	Gr 10	Gr 11	Gr 12	PT Total	
Andover High School		0	1	5	6	18	83	77	178	184
Anoka High School		0	0	1	1	16	77	100	193	194
Blaine High School		0	0	5	5	7	90	134	231	236
Champlin Park High School		0	0	2	2	26	150	151	327	329
Coon Rapids High School		0	0	4	4	11	84	112	207	211
Alternative Schools		0	0	8	8	5	48	111	164	172

STEP students are included in home high school counts above except the Out of District/Non Public

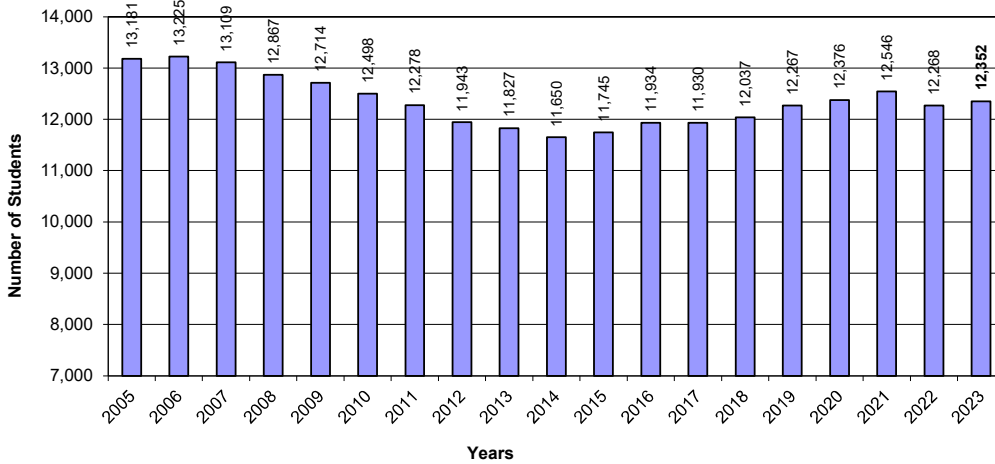
		Gr 6	Gr 7	Gr 8	Gr 9	Gr 10	Gr 11	Gr 12	Total
Secondary Virtual School	0898				10	34	79	124	247

**Secondary Enrollments Grades 6 - 12
October 1 Enrollment
2005-2023**

Middle School Grades 6 - 8 Enrollments 2005-2023

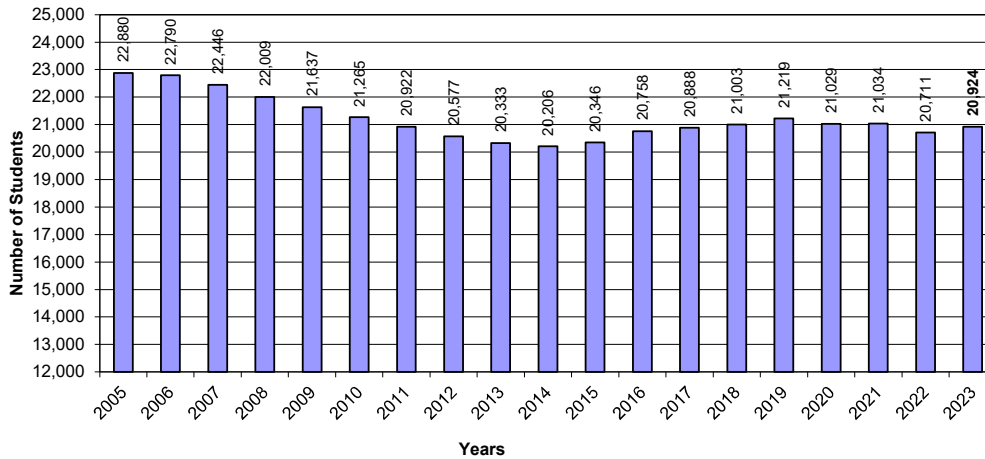


High School Grades 9 - 12 Enrollments 2005 - 2023



Year	Enrollment	Gr 9-12 Enrollment	Gr 6-8 Enrollment
1990	16,830		
1991	17,409		
1992	18,152	9,692	8,460
1993	18,737	10,003	8,734
1994	19,101	10,368	8,733
1995	19,552	10,728	8,824
1996	20,265	11,182	9,083
1997	20,550	11,314	9,236
1998	20,937	11,518	9,419
1999	21,078	11,727	9,351
2000	21,346	11,938	9,408
2001	21,725	12,145	9,580
2002	22,062	12,425	9,637
2003	22,235	12,568	9,667
2004	22,690	12,979	9,711
2005	22,880	13,181	9,699
2006	22,790	13,225	9,565
2007	22,446	13,109	9,337
2008	22,009	12,867	9,142
2009	21,637	12,714	8,923
2010	21,265	12,498	8,767
2011	20,922	12,278	8,644
2012	20,577	11,943	8,634
2013	20,333	11,827	8,506
2014	20,206	11,650	8,556
2015	20,346	11,745	8,601
2016	20,758	11,934	8,824
2017	20,888	11,930	8,958
2018	21,003	12,037	8,966
2019	21,219	12,267	8,952
2020	21,029	12,376	8,653
2021	21,034	12,546	8,488
2022	20,711	12,268	8,443
2023	20,924	12,352	8,341

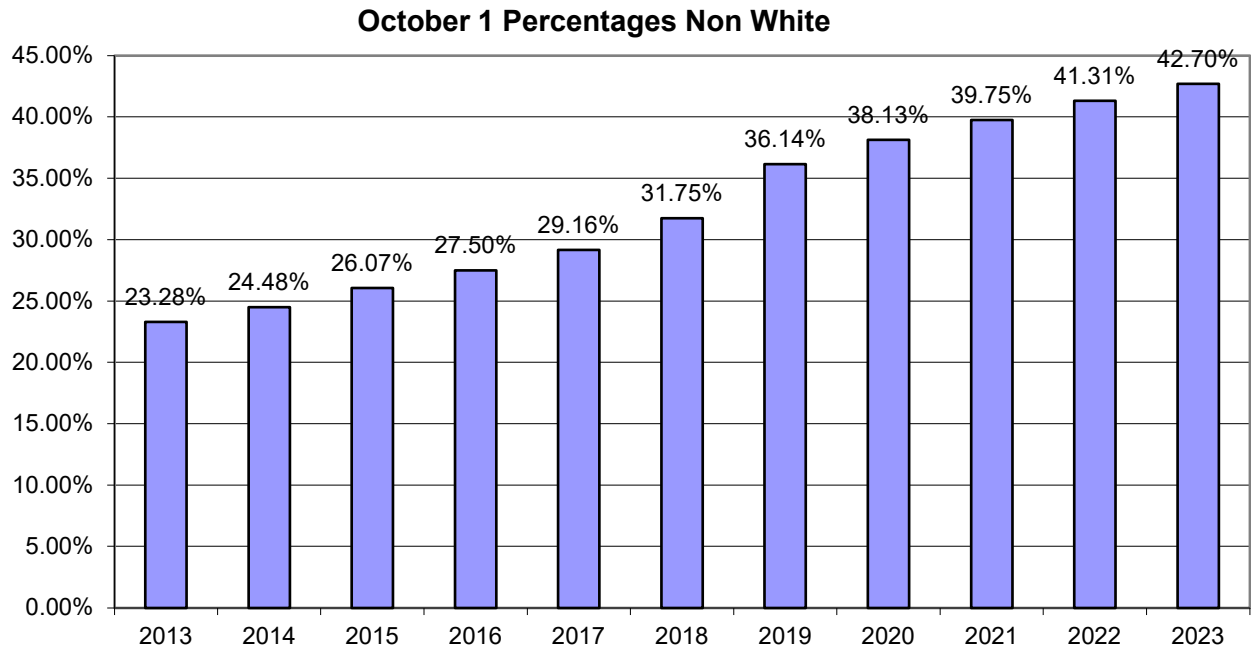
Secondary 6 - 12 Enrollments 2005 - 2023



**Ethnicity by School
October 1, 2023**

School Name	Enrolled	% NonWhite	American Indian	Asian	Hispanic	Black	White	Pacific Islander	Two or More
Elementary Schools									
Adams Elementary School	468	62.61%	1	69	40	125	175	0	58
Andover Elementary School	1204	22.01%	2	67	57	69	939	0	70
Brookside Elementary School	775	24.77%	2	61	35	46	583	0	48
Champlin Brooklyn Park	775	46.71%	4	111	52	128	413	0	67
Crooked Lake Elementary	458	26.64%	1	21	23	47	336	0	30
Dayton Elementary School	544	45.04%	7	41	71	77	299	1	48
Eisenhower Elementary	485	49.28%	4	47	80	51	246	0	57
Evergreen Park Elementary	408	90.93%	0	94	83	154	37	0	40
Hamilton Elementary School	381	61.15%	5	52	38	88	148	1	49
Hoover Elementary School	459	47.06%	3	53	43	57	243	0	60
Jefferson Elementary School	651	49.46%	3	99	53	108	329	0	59
Johnsville Elementary	662	41.69%	1	50	42	111	386	0	72
Lincoln Elementary School	427	37.94%	3	22	38	52	265	0	47
Madison Elementary School	424	45.28%	1	65	52	46	232	0	28
McKinley Elementary School	653	17.76%	0	46	17	12	537	0	41
Mississippi Elementary	461	48.37%	0	55	38	71	238	1	58
Monroe Elementary School	545	74.31%	4	162	57	126	140	0	56
Morris Bye Elementary	440	53.41%	3	65	28	90	205	0	49
Oxbow Creek Elementary	1110	37.03%	5	116	51	130	699	0	109
Ramsey Elementary School	949	49.42%	3	74	66	244	480	2	80
Rum River Elementary	853	19.46%	2	45	44	33	687	0	42
Sand Creek Elementary	577	48.53%	4	61	46	89	297	1	79
Sunrise Elementary School	993	34.04%	2	88	26	162	655	1	59
University Ave Elementary	588	56.12%	6	49	59	153	258	0	63
Wilson Elementary School	574	43.55%	4	56	30	98	324	0	62
Elementary Totals	15864	42.32%	70	1669	1169	2367	9151	7	1431
Middle Schools									
Anoka Middle School	1613	37.32%	11	103	104	237	1011	0	147
Coon Rapids Middle School	1361	56.36%	8	152	146	306	594	1	154
Jackson Middle School	2032	55.76%	10	342	189	394	899	1	197
Northdale Middle School	1038	45.09%	5	121	96	151	570	2	93
Oak View Middle School	1282	22.39%	1	64	64	73	995	0	85
Roosevelt Middle School	1015	33.79%	7	84	54	125	672	0	73
Middle School Totals	8341	43.16%	42	866	653	1286	4741	4	749
High Schools									
Andover High School	1836	21.02%	5	75	89	115	1450	1	101
Anoka High School	2388	35.39%	14	151	155	322	1543	1	202
Blaine High School	3139	42.02%	21	340	241	493	1820	1	223
Champlin Park High School	3016	56.47%	17	424	299	694	1313	3	266
Coon Rapids High School	2204	51.77%	19	232	175	505	1063	3	207
High School Totals	12583	42.87%	76	1222	959	2129	7189	9	999
District Totals	36788	42.70%	188	3757	2781	5782	21081	20	3179
			0.51%	10.21%	7.56%	15.72%	57.30%	0.05%	8.64%
	Enrolled	NonWhite	American Indian	Asian	Hispanic	Black	White	Pacific Islander	Two or More
2023-24 Year	36788	42.70%	0.51%	10.21%	7.56%	15.72%	57.30%	0.05%	8.64%
2022-23 Year	36617	41.31%	0.49%	9.87%	7.26%	15.04%	58.69%	0.05%	8.59%
2021-22 Year	36,606	39.75%	0.49%	9.34%	7.16%	14.31%	60.25%	0.07%	8.39%
2020-21 Year	36,325	38.13%	0.57%	8.85%	6.90%	13.40%	61.87%	0.07%	8.33%
2019-20 Year	37,386	36.14%	0.58%	8.43%	6.59%	12.67%	63.86%	0.06%	7.82%
2018-19 Year	37,008	31.75%	0.62%	7.90%	5.86%	12.01%	68.25%	0.11%	5.25%
2017-18 Year	37,062	29.05%	1.58%	8.60%	5.31%	13.56%	70.58%	-	-
2016-17 Year	37,200	27.50%	1.48%	8.27%	5.12%	12.63%	72.50%	-	-
2015-16 Year	36,556	26.07%	1.47%	7.76%	4.80%	12.04%	73.93%	-	-
2014-15 Year	36,478	24.48%	1.44%	7.32%	4.49%	11.22%	75.52%	-	-
2013-14 Year	36,646	23.28%	1.41%	6.95%	4.26%	10.66%	76.72%	-	-
2012-13 Year	36,758	22.22%	1.38%	6.59%	4.08%	10.17%	77.78%	-	-
2011-12 Year	37,170	21.88%	1.34%	6.50%	3.98%	10.06%	78.12%	-	-
2010-11 Year	37,532	21.48%	1.32%	6.50%	3.94%	9.73%	78.52%	-	-
2009-10 Year	38,181	20.99%	1.30%	6.42%	3.85%	9.42%	79.01%	-	-
2008-09 Year	38,559	20.40%	1.33%	6.39%	3.60%	9.08%	79.60%	-	-
2007-08 Year	39,164	18.92%	1.20%	6.19%	3.19%	8.33%	81.08%	-	-

District Percent Non White



Year	Percent by Ethnic Group							
	% NonWhite	Native Am	Asian	Hispanic	Black	White	Pacific Islander	Two or More
2011	21.88%	1.34%	6.50%	3.98%	10.06%	78.12%	-	-
2012	22.22%	1.38%	6.59%	4.08%	10.17%	77.78%	-	-
2013	23.28%	1.41%	6.95%	4.26%	10.66%	76.72%	-	-
2014	24.48%	1.44%	7.32%	4.49%	11.22%	75.52%	-	-
2015	26.07%	1.47%	7.76%	4.80%	12.04%	73.93%	-	-
2016	27.50%	1.48%	8.27%	5.12%	12.63%	72.50%	-	-
2017	29.16%	1.58%	8.64%	5.33%	13.61%	70.84%	-	-
2018	31.75%	0.62%	7.90%	5.86%	12.01%	68.25%	0.11%	5.25%
2019	36.14%	0.58%	8.43%	6.59%	12.67%	63.86%	0.06%	7.82%
2020	38.13%	0.57%	8.85%	6.90%	13.40%	61.87%	0.07%	8.33%
2021	39.75%	0.49%	9.34%	7.16%	14.31%	60.25%	0.07%	8.39%
2022	41.31%	0.49%	9.87%	7.26%	15.04%	58.69%	0.05%	8.59%
2023	42.70%	0.51%	10.21%	7.56%	15.72%	57.30%	0.05%	8.64%

**ESL by School by Service Level
October 1, 2023**

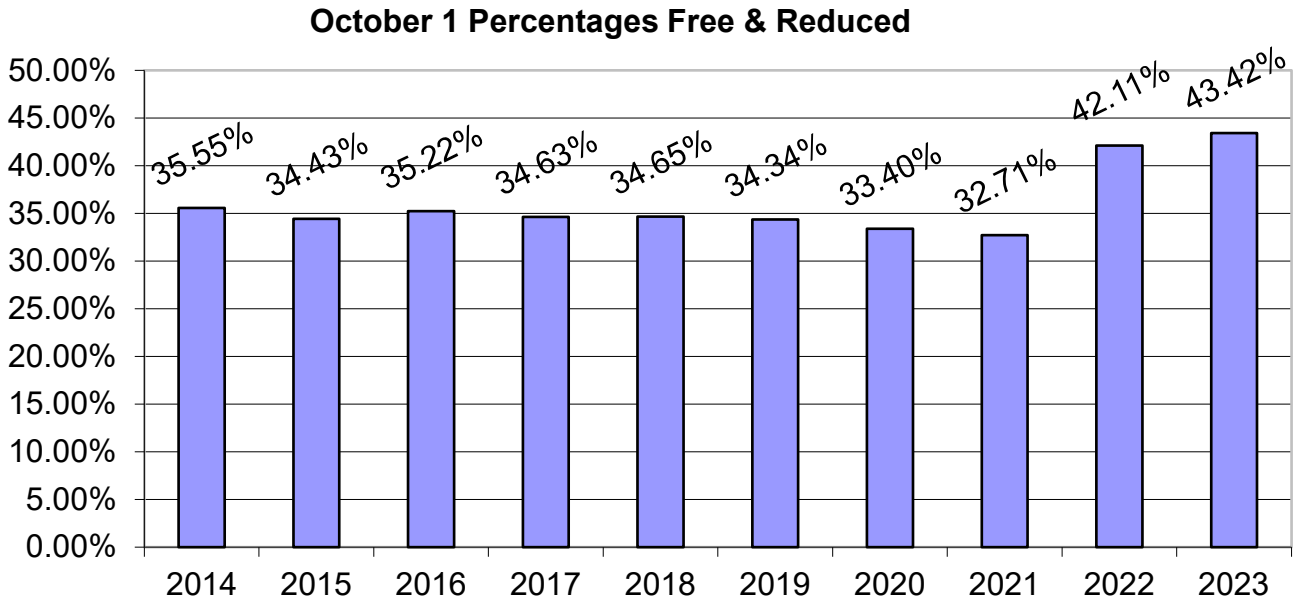
Students Eligible and Participating

School Name	Total	Enrl	%	ESL Levels					Bridging	Reaching
				Qualify K-1	Entering	Emerging	Developing	Expanding		
Elementary Schools										
Adams Elementary School	123	468	26.28%	2	47	31	32	11		
Andover Elementary School	55	1204	4.57%	0	11	5	24	15		
Brookside Elementary School	62	775	8.00%	0	16	13	26	7		
Champlin Brooklyn Park	83	775	10.71%	0	29	19	23	12		
Crooked Lake Elementary	31	458	6.77%	0	1	6	20	4		
Dayton Elementary School	77	544	14.15%	0	30	20	22	5		
Eisenhower Elementary	104	485	21.44%	0	24	27	42	11		
Evergreen Park Elementary	124	408	30.39%	1	32	24	56	11		
Hamilton Elementary School	77	381	20.21%	0	22	18	31	6		
Hoover Elementary School	42	459	9.15%	0	16	6	14	6		
Jefferson Elementary School	131	651	20.12%	0	44	24	47	16		
Johnsville Elementary	73	662	11.03%	1	14	14	32	12		
Lincoln Elementary School	38	427	8.90%	0	11	11	12	4		
Madison Elementary School	60	424	14.15%	0	16	12	18	14		
McKinley Elementary School	36	653	5.51%	0	12	6	17	1		
Mississippi Elementary	72	461	15.62%	0	13	18	30	11		
Monroe Elementary School	132	545	24.22%	0	25	37	50	20		
Morris Bye Elementary	55	440	12.50%	0	12	13	24	6		
Oxbow Creek Elementary	97	1110	8.74%	0	22	20	31	24		
Ramsey Elementary School	131	949	13.80%	0	33	31	53	14		
Rum River Elementary	43	853	5.04%	0	8	8	20	7		
Sand Creek Elementary	91	577	15.77%	0	31	18	33	9		
Sunrise Elementary School	91	993	9.16%	0	20	15	39	17		
University Ave Elementary	69	588	11.73%	0	24	12	21	12		
Wilson Elementary School	65	574	11.32%	0	9	15	31	10		
ESL Site Totals	1962	15864	12.37%	4	522	423	748	265		
District Elem Totals		15,864	12.37%							
Middle Schools										
Anoka MS	89	1613	5.52%	0	8	12	38	31		
Coon Rapids MS	128	1361	9.40%	0	24	16	58	30		
Jackson MS	174	2032	8.56%	0	16	26	99	33		
Northdale MS	60	1038	5.78%	0	5	11	26	18		
Oakview MS	31	1282	2.42%	0	3	5	13	10		
Roosevelt MS	49	1015	4.83%	1	5	8	24	11		
ESL Site Totals	531	8341	6.37%	1	61	78	258	133		
District MS Totals		8,341	6.37%							
High Schools										
Andover HS	29	1836	1.58%	0	1	5	15	8		
Anoka HS	92	2388	3.85%	0	9	23	43	17		
Blaine HS	174	3139	5.54%	0	24	21	83	46		
Champlin Park HS	232	3016	7.69%	0	17	40	124	51		
Coon Rapids HS	171	2204	7.76%	0	33	28	75	35		
ESL Site Totals	698	12583	5.55%	0	84	117	340	157		
District HS Totals		12,583	5.55%							
District Total	3191	36788	8.67%	5	667	618	1346	555		
				Qualify K-1	Entering	Emerging	Developing	Expanding	Bridging	Reaching
2023-2024 Dist Total	3191	36,788	8.67%	5	667	618	1346	555		
2022-2023 Dist Total	3208	36617	8.76%	19	624	621	1383	561	0	0
2021-2022 Dist Total	2699	36606	7.37%	5	667	618	1346	555	0	0
2020-2021 Dist Total	2445	36325	6.73%	157	275	401	1076	536	0	0
2019-2020 Dist Total	2578	37386	6.90%	367	302	389	1017	503	0	0
2018-2019 Dist Total	2388	37008	6.45%	355	258	355	902	518	0	0
2017-2018 Dist Total	2304	37062	6.22%	294	286	392	871	461	0	0
2016-2017 Dist Total	2132	37200	5.73%	289	230	255	485	602	270	1
2015-2016 Dist Total	2112	36556	5.78%	285	232	234	532	655	174	0
2014-2015 Dist Total	2347	36478	6.43%	312	199	230	646	749	203	8
Previous ESL Levels										
					New	Beg	AdvBg	Intermd	Adv	Monitor
2012-2013 Dist Total	2438	36758	6.63%		79	619	482	562	443	253
2011-2012 Dist Total	2364	37170	6.36%		141	527	517	560	438	181
2010-2011 Dist Total	2261	37532	6.02%		137	539	438	497	434	216
2009-2010 Dist Total	2332	38181	6.11%		165	552	453	416	537	209
2008-2009 Dist Total	2379	38559	6.17%		173	575	486	566	378	201

**Free and Reduced/Economic Indicator by School
October 1, 2023**

School Name	Enrolled	Total F&R	F&R		Free	%	
			Total%	Reduced			
Elementary Schools							
Adams Elementary School	468	339	72.44%	53	11.32%	286 61.11%	
Andover Elementary School	1204	267	22.18%	61	5.07%	206 17.11%	
Brookside Elementary School	775	244	31.48%	62	8.00%	182 23.48%	
Champlin Brooklyn Park	775	351	45.29%	84	10.84%	267 34.45%	
Crooked Lake Elementary	458	175	38.21%	33	7.21%	142 31.00%	
Dayton Elementary School	544	189	34.74%	46	8.46%	143 26.29%	
Eisenhower Elementary	485	292	60.21%	60	12.37%	232 47.84%	
Evergreen Park Elementary	408	342	83.82%	74	18.14%	268 65.69%	
Hamilton Elementary School	381	281	73.75%	67	17.59%	214 56.17%	
Hoover Elementary School	459	276	60.13%	55	11.98%	221 48.15%	
Jefferson Elementary School	651	333	51.15%	60	9.22%	273 41.94%	
Johnsville Elementary	662	337	50.91%	68	10.27%	269 40.63%	
Lincoln Elementary School	427	254	59.48%	46	10.77%	208 48.71%	
Madison Elementary School	424	226	53.30%	46	10.85%	180 42.45%	
McKinley Elementary School	653	128	19.60%	18	2.76%	110 16.85%	
Mississippi Elementary	461	290	62.91%	45	9.76%	245 53.15%	
Monroe Elementary School	545	292	53.58%	56	10.28%	236 43.30%	
Morris Bye Elementary	440	250	56.82%	51	11.59%	199 45.23%	
Oxbow Creek Elementary	1110	327	29.46%	93	8.38%	234 21.08%	
Ramsey Elementary School	949	573	60.38%	130	13.70%	443 46.68%	
Rum River Elementary	853	210	24.62%	59	6.92%	151 17.70%	
Sand Creek Elementary	577	291	50.43%	51	8.84%	240 41.59%	
Sunrise Elementary School	993	227	22.86%	41	4.13%	186 18.73%	
University Ave Elementary	588	366	62.24%	62	10.54%	304 51.70%	
Wilson Elementary School	574	313	54.53%	62	10.80%	251 43.73%	
Elementary Totals	15864	7173	45.22%	1483	9.35%	5690 35.87%	
Middle Schools							
Anoka Middle School	1613	730	45.26%	158	9.80%	572 35.46%	
Coon Rapids Middle School	1361	848	62.31%	177	13.01%	671 49.30%	
Jackson Middle School	2032	893	43.95%	196	9.65%	697 34.30%	
Northdale Middle School	1038	495	47.69%	125	12.04%	370 35.65%	
Oak View Middle School	1282	287	22.39%	65	5.07%	222 17.32%	
Roosevelt Middle School	1015	364	35.86%	84	8.28%	280 27.59%	
Middle School Totals	8341	3617	43.36%	805	9.65%	2812 33.71%	
High Schools							
Andover High School	1836	396	21.57%	103	5.61%	293 15.96%	
Anoka High School	2388	975	40.83%	224	9.38%	751 31.45%	
Blaine High School	3139	1208	38.48%	275	8.76%	933 29.72%	
Champlin Park High School	3016	1340	44.43%	301	9.98%	1039 34.45%	
Coon Rapids High School	2204	1265	57.40%	247	11.21%	1018 46.19%	
High School Totals	12583	5184	41.20%	1150	9.14%	4034 32.06%	
District Totals	36788	15974	43.42%	3438	9.35%	12536 34.08%	
			F&R				
	Enrolled	Total F&R	Total%	Reduced	%	Free	%
2023-2024 District Totals	36788	15974	43.42%	3438	9.35%	12536	34.08%
2022-2023 District Totals	36617	15419	42.11%	3756	10.26%	11663	31.85%
2021-2022 District Totals	36606	11973	32.71%	3044	8.32%	8929	24.39%
2020-2021 District Totals	36325	12132	33.40%	3357	9.24%	8775	24.16%
2019-2020 District Totals	37386	12840	34.34%	3859	10.32%	8981	24.02%
2018-2019 District Totals	37008	12824	34.65%	3496	9.45%	9328	25.21%
2017-2018 District Totals	37062	12834	34.63%	3475	9.38%	9359	25.25%
2016-2017 District Totals	37200	13102	35.22%	3451	9.28%	9651	25.94%
2015-2016 District Totals	36556	12588	34.43%	2951	8.07%	9637	26.36%
2014-2015 District Totals	36478	12967	35.55%	2698	7.40%	10269	28.15%
2013-2014 District Totals	36646	12757	34.81%	3131	8.54%	9626	26.27%
2012-2013 District Totals	36758	12520	34.06%	2944	8.01%	9576	26.05%
2011-2012 District Totals	37170	12576	33.83%	2883	7.76%	9693	26.08%
2010-2011 District Totals	37532	11905	32.02%	3426	9.22%	8479	22.81%

**District Percent Free & Reduced
October 1 Percentages
2014- 2023**



	Total% F&R	% Reduced	% Free
2003	18.67%	6.11%	12.56%
2004	19.43%	6.13%	13.30%
2005	20.37%	6.45%	13.92%
2006	21.79%	7.13%	14.66%
2007	22.35%	7.10%	15.25%
2008*	26.73%	8.38%	18.36%
2009	30.66%	7.57%	23.08%
2010	31.72%	9.13%	22.59%
2011	33.84%	7.76%	26.08%
2012	34.06%	8.01%	26.05%
2013	34.81%	8.54%	26.27%
2014	35.55%	7.40%	28.15%
2015	34.43%	8.07%	26.36%
2016	35.22%	9.28%	25.94%
2017	34.63%	9.38%	25.25%
2018	34.65%	9.45%	25.21%
2019	34.34%	10.32%	24.02%
2020	33.40%	9.24%	24.16%
2021	32.71%	8.32%	24.39%
2022	42.11%	10.26%	31.85%
2023	43.42%	9.35%	34.08%

* Totals reflect New 30 day Carry Over rule change